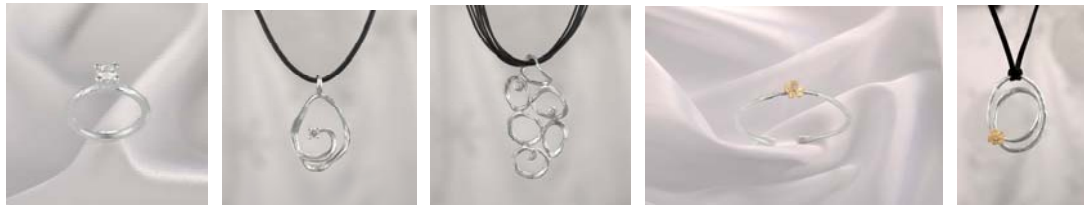


Blicherfuglsang



Danish Jewellery Design and Craftsmanship in Unique Formations

Yet another chapter is added to the fairytale about Danish design when the Danish jewellery brand blicherfuglsang makes its entry on the German market and into the hearts of German jewellery lovers.

The Aesthetic Universe of blicherfuglsang

blicherfuglsang is a jewellery brand which since its introduction in 2002 has thrilled Danish women with its universe and beautiful, exclusive jewellery that adds completely unique qualities to the classical craftsmanship. A piece of jewellery from blicherfuglsang is a unique aesthetic experience of senses.

The artistic universe is based on goldsmith Tom Blicher's and jewellery artist Gitte Fuglsang's talent for unique designs. The limit between art and jewellery design is transcended when the creative duo – through playing interpretations of classical shapes – creates sculptural jewellery for the woman who wants to be noticed.

Autumn 2009

With their usual uncompromising eye for quality, blicherfuglsang now presents the autumn collections 2009 for the discerning German audience.

The sculptural, expressive formations in combination with classical details in an unrefined and brave interpretation are characteristics of blicherfuglsang's design.

Silver

blicherfuglsang's talent for the original has resulted in a silver collection that unites white brilliants and golden details with the silver's unrefined yet sophisticated texture.

The combination of the exclusive jewellery materials and the chains in leather, suede, cotton and silver create a pure expression with rustic undertones.

Gold

The exclusive gold collection is blicherfuglsang's grand finale 2009, and we are proud to present a collection of classics for the future. Each piece of jewellery is a sculptural art piece for the woman who wants to accentuate her personality with eye-catching jewellery. blicherfuglsang's creations promote and emphasise the precious in the noble materials, and the organic shapes in beautiful combination with sparkling bright brilliants bring out the adventure in the gold jewellery.

Distribution

We wish to provide blicherfulgsang's designs to quality conscious German women through distribution at selected exclusive jewellery stores situated in the large cities in Germany, who want to give their customers a unique experience of Danish design.

Design Team

Tom Blicher and Gitte Fuglsang are the two artists behind the blicherfuglsang brand. With their 20 years of experience in the field, Tom as a goldsmith and Gitte as a jewellery designer, the creative duo combines the best of both worlds resulting in new expressions of the art form in the time honoured tradition of Danish elegance and simplicity.

Contact

For more information about blicherfuglsang please contact

Malene Hansen, Matogi Group +45 7020 8122 or visit www.blicherfuglsang.dk